

Routine vaccinations are one of the Six Pillars of Preventative Health Care

Critical Pillars of Good Health:

- ◆ *Regular Wellness Exams and Early Detections of Disease*
- ◆ *Routine Vaccinations*
- ◆ *Preventative Dental Care*
- ◆ *Parasite and Flea Control and Prevention*
- ◆ *Regular Exercise*
- ◆ *Nutrition*

Talk to one of our veterinarians about your pet's preventative health care today!



SHAW PET HOSPITALS

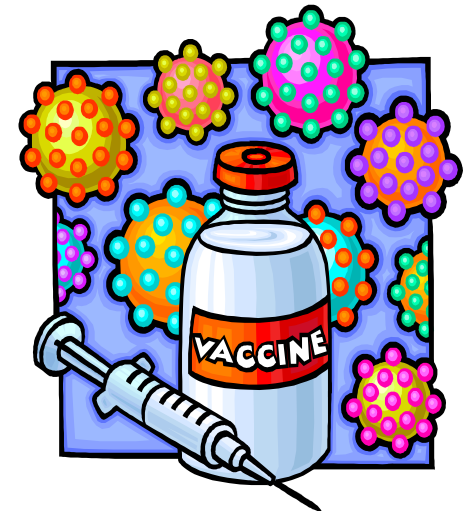
**Central Saanich
Animal Hospital
(250)-652-4312**

**Vetcetera Pet
Hospital
(250)-361-1287**

**Hollywood Pet
Hospital
(250)-370-7734**

SHAW PET HOSPITALS

Facts about vaccines for your dog and cat



ROUTINE VACCINATIONS

Routine vaccinations are critical in your pets preventative health care.

What is a vaccine?

Simply put; A preparation of weakened microorganisms given to create resistance to a certain disease.

How is it given?

Vaccines are administered through needle injections, by mouth and by aerosol.

Why are vaccines necessary?

Vaccines can provide protection against many communicable diseases that could be deadly to your pet or even to you. Usually given by injection a vaccine activates cells in your body to fight the virus. When it has been defeated, the cells retain a memory of the virus so next time, they will know how to fight off the infection.

Shaw Pet Hospitals only recommends having a veterinarian give vaccines incase of underlying health issues.

What are the recommended vaccines for my cat?

Shaw Pet Hospitals recommends the following for cats:

FVRCP: Given a 8, 12 and 16 weeks. Boostered 1 year later and then every 3 years for life.

Feline Leukemia (felv): Given at 12 and 16 weeks and then yearly for life for all outside cats or indoor cats where there is more than 1 cat.

Rabies: Given at 16 weeks, then boosted 1 year later and then every 3 years for life.

What do these vaccines protect from?

FVRCP: Feline herpesvirus (the cause of feline rhinotracheitis), feline calicivirus and feline parvovirus (the cause of panleukopenia)

Feline Leukemia(felv): A retrovirus similar to Feline immunodeficiency virus (FIV) and human immunodeficiency virus (HIV). This is only transmittable to other felines.

Rabies: A zoonotic (transmittable between humans and animals) disease. All mammals can carry rabies and it is usually fatal. It is passed through the saliva and is unnoticeable in the early stages. Once diagnosed a rabid animal must be euthanized.

What are the recommended vaccines for my dog?

Shaw Pet Hospitals recommends the following for dogs:

Da2pp1/c: Given at 8, 12 and 16 weeks. Boostered 1 year later and then every 3 years for life.

Rabies: Given at 16 weeks, boosted 1 year later and then every 3 years for life.

Bordetella: Given at 12 and 16 weeks. Boostered 1 year later and then every year for life.

Lyme: Give at 12 and 16 weeks. Boostered 1 year later and then yearly for life.

What do these vaccines protect from?

Da2pp1/c: Canine parvovirus, distemper, adenovirus, parainfluenza, coronavirus and leptospira.

Bordetella: Also called Canine or Kennel Cough. An airborne organism that causes continual coughing for up to 3 weeks.

Lyme: Passed along by ticks, lyme disease can damage organs.